



# Art Show & Auction

## 19 September 2024

**CANTERBURY  
MOUNTAINEERING CLUB**

EST. 1925

Discover the intersection of art and mountaineering at this event with over 30 paintings and sculptures featuring breathtaking mountain scenes.

Background Image - Alpenglow Rome Ridge by Agata Sknoeczna (for sale on the night)

*Agata Sknoeczna*  
2024

# Event Details

---

TSB Space, Level 1, Tūranga Christchurch City Library.

Doors open at 6pm, auction 7pm-8pm.

Food and beverages for sale on the night.

Tickets available at [CMC.net.nz](http://CMC.net.nz). Or follow the QR code. Koha of \$10-\$15 per ticket is requested, with all proceeds going towards the club centenary book.

Tickets are limited, so get in quick.



# There's Something For Every Taste...

---



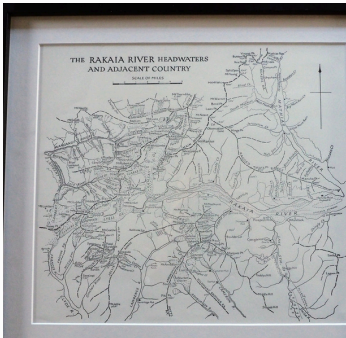
Original artworks



Limited edition prints



Sculptures



Historical artifacts



Crafts



Jewellery

## ...and Every Budget

---

- Items under \$100 are available for sale rather than auction.
- Potential price ranges for auction items will be indicated by coloured stickers by the artworks::

● \$100 - \$500

● \$500 - \$1,000

● \$1,000 - \$2,000

# Featured Artist

## Agata Skoneczna

Agata is a watercolour artist who creates light, impressionist paintings that aim to ignite connectedness to nature and bring tranquility. Agata's artworks are invitations to zoom-out from the hyper focus of modern life, to embrace a bigger picture, to reflect. Agata started her art journey in Poland, where she grew up. She has been practising art for 14 years. In July 2023, she decided to promote her art under the Polish name Dobre Studio to celebrate her roots and journey. "Dobre" in Polish means "good", "sweet-tempered" or "sweet-natured".

[www.dobrestudio.co.nz](http://www.dobrestudio.co.nz)



### Alpenglow Rome Ridge ●

This iconic view is New Zealand's mountaineering classic, with its light, fairy-tale colours bringing cheerfulness and comfort.

Made on 600 gsm 100% cotton acid-free rag.

Art Size: Appx. 380 x 710mm without the frame, 550 x 880mm framed. Frame: TBA



### Twilight Over Tititea (framed) ●

Inspired by a gorgeous photograph taken by Cam Stables, a radiant Mount Tititea humbles everything she touches. Made with permission of the photographer.

Made on 600 gsm 100% cotton acid-free rag.

Art Size: Appx. 520 x 660mm without the frame, 690 x 830mm framed. Frame: natural oak moulding and Spanish White 6ply mat board.

# Featured Artist

## Andy Buchanan

A Christchurch native, Andy has been an amateur artist for 25 years, using palette-applied oil paints to create images of New Zealand mountain scenery, using mountainous locations where he has tramped, climbed, or skied.

Andy says, "My goal is to re-create a feeling of being in the mountains, using the simplest forms possible. Every painting is the result of finding a balance between two extremes of too much simplicity or too much detail, neither of which is satisfactory. My focus is on the mountain landscape, so I give little attention to the sky, and there is no human content. My recurring themes are straight lines, geometric shapes, and simple colours."

[www.andy-buchanan-art.nz](http://www.andy-buchanan-art.nz)



**Aigrette from Centennial Hut** ●

Oil on canvas.  
610 x 460mm, framed.



**Hut Range from Tin Hut, Cass Valley** ●

Oil on canvas.  
610 x 460mm, framed.

# Featured Artist

## Annika Maenpaa

Annika is an artist and an art educator from Finland. She received her degree in Art Education in the University of Lapland while living in the Finnish arctic region. Living in the arctic circle has affected her art and relationship with nature greatly. Painting landscapes is a way of strengthening the love and appreciation towards nature while also trying to capture very specific moments and feelings these landscapes provide for us.

Instagram: @annikamaenpaa



## Blue Aoraki ●

Capturing the last moments of sunlight by Aoraki. The small window between the golden hour and blue light when the warm pinks and golds turn into cold blues.

Acrylic painting on stretched canvas. 50cm x 76cm

2024

# Featured Artist

## **Anoushka Szybowski**

Szybowski is inspired by the surroundings of her home in the Paparoa National Park; the bush, the birds, the pounding ocean and the power of nature in this wonderful place. Her personal interaction with nature and vibrant bird life, provide much of her subject matter, prompting highly detailed and beautifully composed finished drawings that explore the personalities and characters of the unique feathered fauna of Aotearoa.

Szybowski works mostly in the challenging mediums of pencil or charcoal, and is a master of tone and texture, constructing large scale, monochrome works that allow the viewer to access close encounters of avian diversity; the petit, the shy, the sly, the wise the cheeky, the silent and solitary, the generous, genius, unflappable and the destructively dangerous.

[www.anoushka.szybowski.weebly.com](http://www.anoushka.szybowski.weebly.com)



**Kea** ●

Archival quality print

2019

# Featured Artist

## Clare Logan

For Lyttelton/Ōhinehou based artist Clare Logan, painting is a method of exploring boundaries and thresholds between the material and psychic realms. Evoking receding glaciers, watery inundations, and jutting massifs, her work considers the ways in which our inner worlds overlay embodied experience, with that which is dreamt, felt or imagined. She uses oil paint and other media experimentally, staging disruptions, flows and interactions that echo those of geomorphological processes, pushing and pulling the potential of paint to create spaces reminiscent of strange dreams.

Clare is represented by City Art Depot, and will be exhibiting new work there in a show that opens on the 8th of October.



**Wind Cinder** ●

Oil on Board

1000 x 800mm

2023



# Featured Artist

## Diana McMahon

Vibrant and usually very realistic, Diana's art features wild South Island places and inhabitants. In this time of worldwide environmental upheaval, she focuses on the nearby and local, on the often overlooked, right at our feet.

Diana seeks to celebrate the wonder filled diversity of our environment, a complex of inter-related and inter-dependant organisms and systems.



### Snowberry at Liverpool Hut, Mt. Aspiring Nat. Park

After a steep sweaty uphill trudge, the hut was a welcome sight! Moving away from strict realism, I played, simplifying the lines, creating blocks of colour, merging scenes from several viewpoints.... to capture the mountain on a perfect summer day

Art size: 457 x 610 x 15mm



### Gracefully Grounded, Rata

My first painting in a series of NZ native trees. Striving to depict the essence of rata, I applied texture on canvas, then layered the acrylic paint, both thickly and as glazes.

Art size: 400mm x 500mm x 35 mm

Edged canvas.

# Featured Artist

## Jenny Zhao

Jenny is a member of Arts Canterbury. After immigrating to New Zealand in 1997, she fell in love with this beautiful country. Through her artwork, she aims to evoke emotions and transport viewers to the tranquil and captivating beauty of New Zealand. As an artist, she is constantly evolving her skills and exploring new styles.

Instagram: @Jenny\_Zhao\_Artist



### Falling Mountain ●

The acrylic painting captures a winter scene of Falling Mountain in Arthur's Pass, south island, New Zealand, where a 900-metre-high section of mountain peak collapsed during an earthquake in 1929.

This painting depicts the snow-covered mountain on a sunny day, illuminated by warm light. I also contrasted the shadows and sunlit slopes in the foreground.

Medium: Acrylic Size: 510x405mm on framed canvas. Painted: 2024



### McKenzie High Country in Sunset ●

This acrylic painting portrays the Mackenzie High Country bathed in sunlight, rendered in bright orange hues with a realism style. The painting passionately expresses my love for the magnificent landscape of Mackenzie mountain range.

Medium: Acrylic  
Painting Size: 254x204mm, the white frame  
400x300mm  
Painted: 2023

# Featured Artist

## Louise Thwaites

Located in Ilam, Christchurch, Louise is an avid trumper and amateur photographer and combines these interests in producing original paintings of New Zealand's mountain and coastal scenery.

<https://louisethwaites.smugmug.com>



Lake McKenzie ●



On The Road To Roundhill ●



The Winterslow Range ●

# Featured Artist

## Patricia (Pat) Prendergast

Pat is an artist and mountaineer. Her contact with the NZ high country, besides over 50 years of mountaineering, was her work as an artist at Tussock Grasslands & Mountain Lands Institute, then later together with the Centre for Resource Management.

Since the closure of the department, Pat has tutored in Desktop Publishing at both Aoraki (Timaru) & Christchurch Polytechs, worked in the Education Unit, Lincoln University as a graphic artist & tutored watercolour painting at Sarah Deans Art School



**Icebergs, Whitemena Passage, Antarctica** ●  
(watercolour)



**Ski Touring - Rex Simpson Hut, Two Thumbs Range** ●  
(watercolour)

# Featured Artist

## Mike Glover

Mike is an established Canterbury artist, exhibiting his distinctive landscape paintings for over 30 years. Dry pastel has been his preferred medium over this time and gives his work its characteristic soft yet vibrant look. His paintings are in public and private collections in NZ and overseas.



**'Kaitiaki', Augmented Limited Edition** ●

(Giclee 11/50a)



**Greywacky** ●

(Original Pastel on Paper)

# Featured Artist

## Pip Middlemass

pipsivue - o te ao, is a collection of images, paintings and photographs by Pip Walter.

Living near Aoraki Mount Cook in New Zealand, at the base of the Southern Alps, Pip works with a range of media for her art - oils, acrylic, pastels, watercolours, and ink. She is inspired by the energy and raw beauty of these dramatic landscapes, the ecosystems, people, and other strange creatures which inhabit them.

A keen outdoor adventurer herself, Pip enjoys exploring new locations, whether it be by foot, ski, snowshoe or bike. In her spare time, Pip volunteers for a number of community organisations and emergency services. She was the founding member of "Rockin' Frockers" - a group of fun-loving, frock-wearing, (mostly) female cyclists who raised money for charity on the annual Alps to Ocean Scott's Charity Rides.

A bit slower these days, Pip enjoys an excuse to sit and paint for longer, because life is a journey not a destination.



**Wyn Irwin and Thar Lodges with Mount Sebastopol in background.** ●  
Aoraki Mount Cook National Park

Painted on location as part of "Now and Then - Memories of John Magurk Series, winters 2022 and 2023

Media: watercolours and ink  
Size 395mm x 285mm (w x h)



**View of Wyn Irwin and Thar Lodges from Foliage Hill** ●  
Aoraki Mount Cook National Park

Painted on location as part of "Now and Then - Memories of John Magurk Series, winters 2022 and 2023

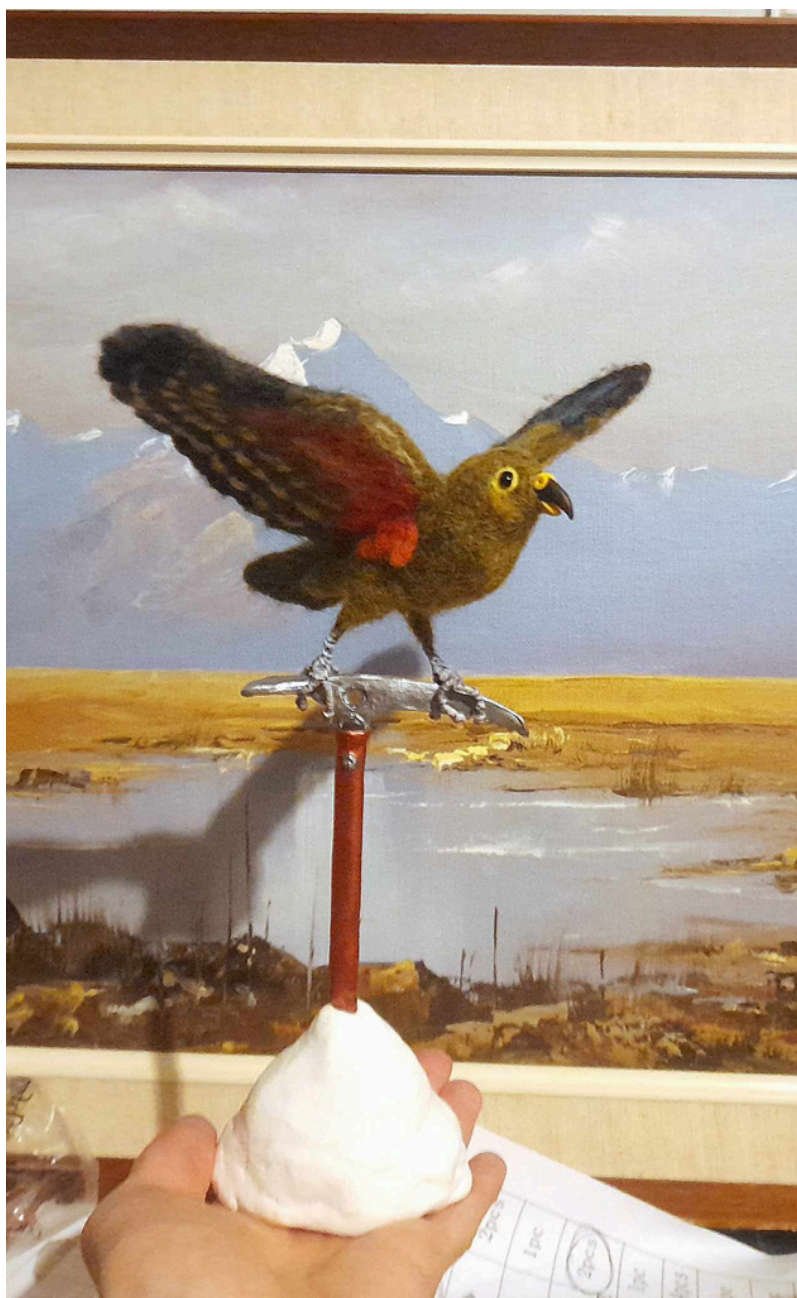
Media: watercolours and ink  
Size 395mm x 285mm (w x h)

# Featured Artist

## Satori Mayell

Satori was born and raised in Ōtautahi and is most familiar with the tracks and huts around Arthurs and Lewis pass (though tends to stay away from the snowline unless she's on a ski field). She uses a variety of artistic mediums to depict the native species and local ecosystems she spends so much time in, being best known for her realistic wool sculptures. Satori uses her art to inspire appreciation and education for our many taonga species that are under threat.

FB - @SatorisCreations



### Mountain Guide ●

A spectacularly coloured juvenile kea alights on an ice axe buried deep in a snowdrift. A sign of a good ascension to come! This one-of-a-kind sculpture is completely handmade in every aspect; with a highly detailed kea made from wool, clay, and thread, an ice-axe handsculpted in polymer clay and painted with high-quality metallic paints, and a heavy clay base made from terracotta airdry clay for stability. Durable, and can be fully disassembled into base components.'

# En Fin

---

This is just a selection of the artists and artworks on offer at the night, so don't miss out and please come along to support the CMC.

TSB Space, Level 1, Tūranga Christchurch City Library.

Doors open at 6pm, auction 7pm-8pm.

Food and beverages for sale on the night.

Tickets available at [CMC.net.nz](http://CMC.net.nz). Or follow the QR code. Koha of \$10-\$15 per ticket is requested, with all proceeds going towards the club centenary book.

Tickets are limited, so get in quick.

